

Instructions

Where can I download this APP:
Please search AROMA 24/7 in Google play or App store.



Note:

1. Please make sure that the Bluetooth function is turned on;
2. Please make sure that the location function of the mobile phone is turned on.

Device + → Add device

AE103 →

Device Setting

Setting About

Name: AE103 → Amend device name

Label: XXXXXX → Remarks: location

Delete working period X

07:00-21:00 Grade: 09 → Add working period

Mon Tue Wed Thur Fri Sat Sun → Time switch

AAA

Input password →

Login

(PS: There are 5 working periods available to be set.)

Amend password

Device control

Set About

PCI Version: AAAA

Equipment version: AAAA

APP version: AAAA

Change password

Change password

The new password:

Confirm password:

Change password

Working period setting

Start working time Stop working time

05:00 00:01 → Slide up and down to adjust

Repeat Mon Tue Wed Thur Fri Sat Sun → Select the day

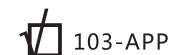
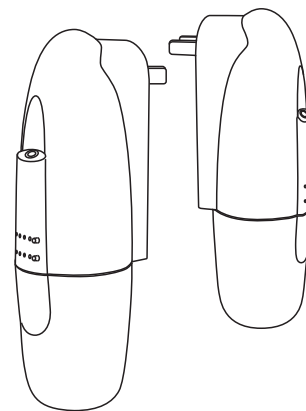
Concentration grade 4 → Select grade (1- 4 grade)

If you forget the password, please press the reset button to restore the factory settings. The factory settings password is 8888.

SENSEI

THE AROMA CULT

PLUGIN DIFFUSER

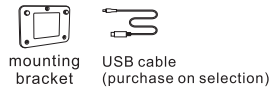
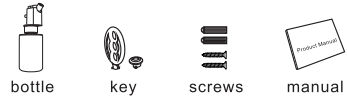
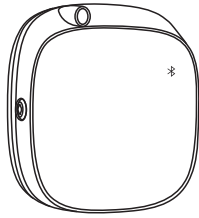


Troubleshooting

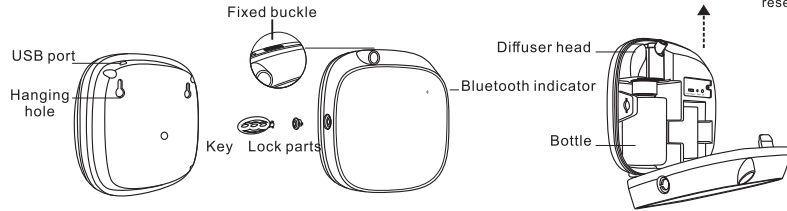
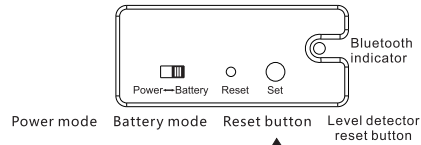
Before having the machine repaired, please try to diagnose the problem first with the below instructions

Symptom	Remedy
Does not diffuse	- Whether the machine is in "not working period". If yes, it won't spray. - Check whether the air pump is damaged. If yes, replace it with a new one.
Spray little	- Check whether the basket is damaged or loose. Please adjust or replace it with a new one. - Check whether the atomized core is plugged; clear it with alcohol or replace it with a new one
Oils pill	- Check whether the atomized head is damaged
Oil overflow	- Check whether the oil bottle is loose, please install it correctly - Check whether the basket of the atomized head is damaged; if yes, please replace it with a new one. - Please keep the machine vertical; Tilt or lie flatly will cause the oil overflow

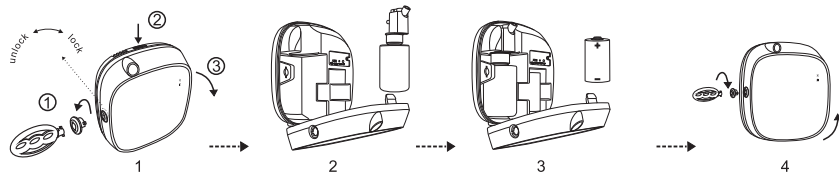
Specification



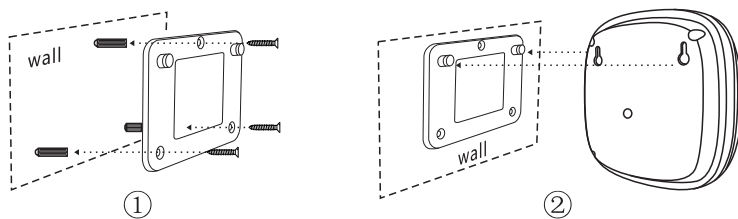
- [Product] : A1-V3.1
- [Size] : 146*156*58mm
- [Volume] : 100ml
- [Weight] : 437g
- [Coverage] : 30m²/90m³/3100ft³
- [Power] : Battery (0.9-1.5V)
USB 5V



Installation



1. Insert the key and the mating part, twirl to "unlock" and then pull them out. Press the fixed buckle on the top and push forward.
2. Tightly connect the atomizer head and the fragrance bottle, and install them to the machine.
3. Choose "Power mode" or "Battery mode", plug in or insert the battery. (Please wait about 12 minutes to let machine charged on the first time connect with power.)
4. Insert the key to the mating parts, then insert them to the keyhole, twirl to "lock" for locking.



3M tape

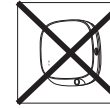
Warning: Please use 3M tape **AND** the nails to fix the mounting bracket.

Warning

1、Please keep the machine vertical. Tilt or lie flatly may cause oil overflow. The machine efficiency may be affected.



2、Shall not modify, disassemble or repair the machine. If any failure happens to the machine, please contact our technical personnel.



3、Do NOT use quick charger for device.

4、When the machine is first used or hasn't been used for more than 7 days, the controlling board is out of power. Please insert the batteries/plug in and wait for 1-2 minutes, the machine will be back on automatically.

Equipment cleaning

The machine needs to be cleaned when below situations happen:

- 1、You're about to change to another kind of essential oil.
- 2、The atomization volume becomes weak.

Cleaning steps:

- 1、Pull out the atomized head, loose the bottle.
- 2、Find a larger container and fill the industrial alcohol up, then soak the atomized head and the bottle for 5-10mins.
- 3、Airing the atomized head and the bottle.

Note:

After cleaning the device, turn on the unit, press and hold SET button for 3 seconds to reset remaining oil level.

Troubleshooting

Before asking to have the machine repaired, please try to diagnose the problem first following to bellow instructions.

Breakdown	Solution
Does not diffuse	-Check whether the mode you choose is correct or not. -Check if the machine is during "Non-Working period" -Air pump may be damaged, change a new one. -Check whether the tube is loose or not
Low diffuse	-The atomizing core is blocked, clean by alcohol or change a new component. -Check whether the gasket is damage/loose or not. -Check whether the tube is loose or not
Oil spill	-Check whether the bottle is loose or not -The gasket in the atomized head is damaged or loose.
Oil sprinkle	-The atomized head is damaged, change a new one -The machine is tilted or lie down, keep the machine vertical.
Abnormal noise	-The air pump is loose, retighten the pump -The air pump is damaged, change a new one.