

Instructions

Where can I download this APP:
Please search AROMA 24/7 in Google play or App store.



Note:

1. Please make sure that the Bluetooth function is turned on;
2. Please make sure that the location function of the mobile phone is turned on.

Device + → Add device

Device Setting

Name: AAA → Amend device name

Label: AAAAAA → Remarks: location

Delete working period ×

07:00-21:00 Grade: 09

Mon Tue Wed Thur Fri Sat Sun

Time switch

Input password

Login

(PS: There are 5 working periods available to be set.)

Amend password

Device control

Set About

PCI Version: AAAA

Equipment version: AAAA

APP version: AAAA

Change password

Change password

The new password

Confirm password

Change password

If you forget the password, please press the reset button to restore the factory settings. The factory settings password is 8888.

Working period setting

Start working time Stop working time

06:00 00:01

Slide up and down to adjust

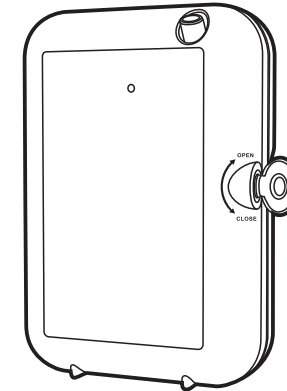
Repeat Mon Tue Wed Thur Fri Sat Sun

Select the day

Concentration grade 6

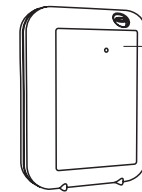
Select grade

AROMA^{24/7}
AIRMAX+



AE106-APP

Reminding



Bluetooth indicator:
--Catch the signal - Flash
--Connected - Light on
--Disconnected - Light off

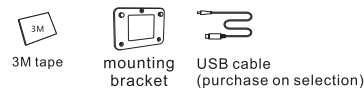
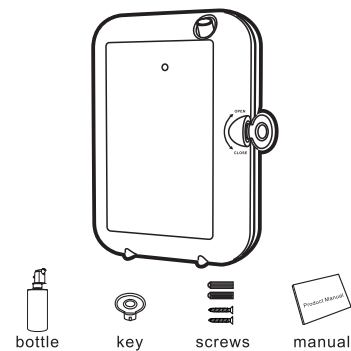
Concentration and Consumption

Grade	G1	G2	G3	G4	G5
Intervals (min)	15	13.5	12	10.5	9
Grade	G6	G7	G8	G9	G10
Intervals (min)	7.5	6	4.5	3	1.5

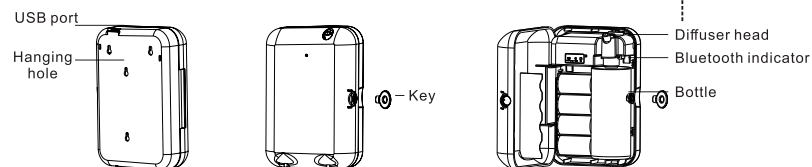
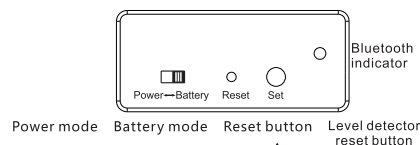
Notes:

1. 480ml oils can diffuse 31000-33000 times under normal circumstances.
2. All of the above grade atomization work time is 5 seconds.
3. Different grade and oil may with different consumption.

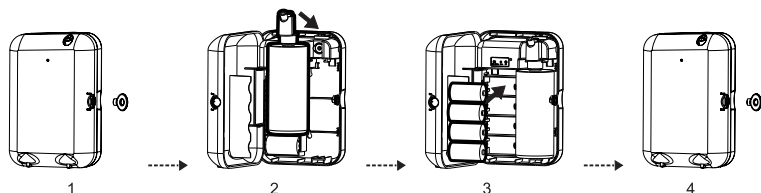
Specification



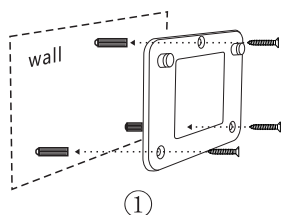
- [Product] : AE106-APP
- [Size] : 159.5*77.5*239mm
- [Volume] : 480ml
- [Weight] : 813g
- [Coverage] : 150m³
- [Power] : Battery (4*1.5V)
USB 5V



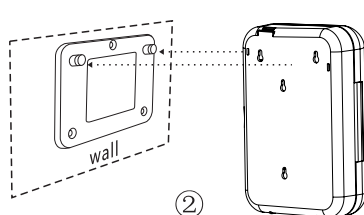
Installation



1. Insert the key and the mating part, twirl to " OPEN " and then pull them out. Press the fixed button on the top and push forward.
2. Tightly connect the atomizer head and the fragrance bottle, and install them to the machine.
3. Choose "Power mode" or "Battery mode", plug in or insert the battery. (Please wait about 12 minutes to let machine charged on the first time connect with power.)
4. Insert the key to the mating parts, then insert them to the keyhole, twirl to "CLOSE" for locking.



1. Fix the 3 screws to the wall



2. Hang the machine on the fixing screw

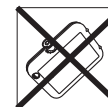
Warning: If you use 3M instead of screw to the wall, please press 3M on the wall 1 minute and then hang machine on.

Warning

1、Please keep the machine vertical. Tilt or lie flatly may cause oil overflow. The machine efficiency may be affected.



2、Shall not modify , disassemble or repair the machine . If any failure happens to the machine, please contact our technical personnel.



3、Do NOT use quick charger for device.

4、When the machine is first used or hasn't been used for more than 7 days, the controlling board is out of power. Please insert the batteries/plug in and wait for 1-2 minutes, the machine will be back on automatically.

Equipment cleaning

The machine needs to be cleaned when below situations happen:

- 1、You're about to change to another kind of essential oil.
- 2、The atomization volume becomes weak .

Cleaning steps:

- 1、Pull out the atomized head, loose the bottle.
- 2、Refill industrial alcohol into bottle about 15%, make it diffuse 5-10 times.
- 3、Airing the atomized head and the bottle.

Troubleshooting

Before asking to have the machine repaired, please try to diagnose the problem first following to below instructions.

Breakdown	Solution
Does not diffuse	-Check whether the mode you choose is correct or not. -Check if the machine is during "Non-Working period" -Air pump may be damaged, change a new one. -Check whether the tube is loose or not
Low diffuse	-The atomizing core is blocked, clean by alcohol or change a new component. -Check whether the gasket is damage/loose or not. -Check whether the tube is loose or not
Oil spill	-Check whether the bottle is loose or not -The gasket in the atomized head is damaged or loose.
Oil sprinkle	-The atomized head is damaged, change a new one -The machine is tilted or lie down, keep the machine vertical.
Abnormal noise	-The air pump is loose, retighten the pump -The air pump is damaged, change a new one.